



Shenzhen ATENTI Technologies Co., Ltd



ATENTI LED DISPLAY

Design-Engineering-Manufacturing-Installation



LED DISPLAY Manufacturer



Address:

-No. 2 Building, Nangang 3rd Industrial Park,
Tangtou Avenue, Shiyan Town, Bao'an District,
Shenzhen, China.

Tel: 86-755-2307 5334/2307 2497

Fax: 86-755-2307 2449

Email: info@atenti-leddisplay.com

www.atenti-leddisplay.com

Company Introduction

Who we are:

SHENZHEN ATENTI TECHNOLOGIES CO., LTD is an integrated manufacturer of Led Display products based in Shenzhen, China. With its strong design and development skills, ATENTI has established itself as a committed long term player in the field of LED DISPLAY manufacturing. We specialize in providing a robust, reliable, innovative and cost effective Led display products that can last the test of time. The management, design and production team consist of people who have been deeply involved in the production of led display with over 20 years of experience. SHENZHEN ATENTI is 100% export oriented company. All our products are in conformity to the latest relevant quality standards such as UL, ETL, FCC, C.E, ROHS, EMC, BIS.

History:

Atenti was established in 1997 in USA for the purpose of outdoor/indoor digital billboards media. In the last 20 years of it being in business for led displays, it has done numerous projects. From the year 2007, Atenti started to acquire led displays from china through its representative office in Hong Kong. In the year 2015, SHENZHEN ATENTI was established as a manufacturing base in China catering to the led display needsof global clients across the world. We also have operations in ITALY, MEXICO, ARGENTINA, TURKEY, DUBAI and INDIA, through strategic partnerships.

Manufacturing Base:

SHENZHEN ATENTI has a manufacturing facility of over 12,000sqm area and has an annual production capacity of over 50,000sqm of led displays. Employing the latest technology and automated manufacturing equipment, we ensure there is rarely manual handling so that it roots out any human errors during production. We employ a 5step QC process which ensures good final products. Manufacturing of Led Displays starts with the fine selection of raw material and components that form the core of led display products. We ensure that our raw materials are heat treated for 12 hrs before they go onto the SMT machines. The heat treatment ensures there is no strains of moisture on PCBA and LED's, thus preventing any cold soldering which is a main cause for concern for many indoor/outdoor led displays. We use narrow Led Bin selection, high quality connectors and soldering paste to improve the overall reliability of our LED DISPLAY products. The Led chip and led encapsulation brands we work with are CREE, AXT, SILAN, NICHIA, EPISTAR, NATIONSTAR and KINGLIGHT. For more technical information on product quality, production and process control please drop us an email to info@atenti-leddisplay.com and we will be more than happy to assist you in your queries.

Company Strategy

- Purpose:** To be a leader in the led display industry by providing enhanced services, complete solutions and bespoke products suitable for client needs.
- Vision:** To provide a highly reliable quality Led Display systems that exceeds the expectations of our esteemed customers.
- Mission statement:** To build long term relationships with our customers and clients, provide exceptional led display products through innovation and advanced technology, and help to keep the clients competitive in their respective territories so that they retain their strong hold for the Brand they have created for themselves in their country
- Core values**
 - We believe in treating our customers with respect and faith. We grow through building partnerships, creativity, and innovation.
 - We integrate honesty, integrity and business ethics into all aspects of our business functioning.
- Goals**
 - To build good reputation in the field of Led Display manufacturing and become a key player in the Led Display industry.

WHY CHOOSE US

We understand quality better than our peers.
 Our approach is to create, enhance and protect the business environment of Atenti's clients
 Provide Unique and creative LED DISPLAY solutions that meet the clients' expectations thus meeting their business objectives
 Continuous search for ways to improve product design, development and process management.
 Creative approaches to the clients' special needs in order to find unique and tailored
 Led Display solutions
 Professional quality of services provided by a highly motivated team



ELITE SERIES



E



ELITE SERIES

Atenti ELITE series is divided into indoor and outdoor application rental products.

- With C.E, UL, BIS, RoHS, EMC Certificate.
- Curved cabinet or Straight cabinet for option.
- Front or Rear access for option, easy to replace and maintain module.
- New and unique multifunctional die-casting Aluminum cabinet design with strong structure.
- Cabinet models can be easy, seamless installed and dismantled.
- Highest reliability, adopted high quality material.
- With high grey scale, high contrast ratio, excellent refresh rate, high Ingress protection.



ELITE SERIES



ELITE SERIES

Model No.	EI-P2.5	EI-P2.97	EI-P3.91	EI-P4.81	EI-P5.95	EO-P3.91	EO-P4.81	EO-P5.95
LED Type	Black SMD 2121 Black SMD 2020	Black SMD 2121 Black SMD 2020	Black SMD 2121 Black SMD 2020	Black SMD 2121 Black SMD 2020	Black SMD 2121 Black SMD 2020	SMD1921	SMD2727	SMD2727
Pixel Pitch(mm)	2.5	2.97	3.91	4.81	5.95	3.91	4.81	5.95
Drive Method	1/25	1/28	1/16	1/16	1/16	1/8	1/13	1/7
Module Size(mm)	250 x 250	250 x 250	250 x 250	250 x 250	250 x 250	250 x 250	250 x 250	250 x 250
Module Resolution (pixel)	100 x 100	84 x 84	64 x 64	52 x 52	42 x 42	64 x 64	52 x 52	42 x 42
Cabinet Size(mm)	500 x 500 x 90	500 x 500 x 90	500 x 500 x 90	500 x 500 x 90	500 x 500 x 90	500 x 500 x 90	500 x 500 x 90	500 x 500 x 90
Cabinet Display Resolution(pixel)	200 x 200	168 x 168	128 x 128	104 x 104	84 x 84	128 x 128	104 x 104	84 x 84
Cabinet Type and Material	Aluminum Die-cast	Aluminum Die-cast	Aluminum Die-cast	Aluminum Die-cast	Aluminum Die-cast	Aluminum Die-cast	Aluminum Die-cast	Aluminum Die-cast
Cabinet Weight (Kg)	≤8	≤8	≤8	≤8	≤8	≤8.5	≤8.5	≤8.5
Pixel Density	160,000 pix/m ²	112,896 pix/m ²	65,536 pix/m ²	43,264 pix/m ²	28,224 pix/m ²	65,536 pix/m ²	43,264 pix/m ²	28,224 pix/m ²
Viewing Angle	H 140° , V 140°	H 140° , V 140°	H 140° , V 140°	H 140° , V 140°	H 140° , V 140°	H 140° , V 140°	H 140° , V 140°	H 140° , V 140°
Brightness	≥900cd/m ²	≥1200cd/m ²	≥1200cd/m ²	≥1200cd/m ²	≥1200cd/m ²	≥5500cd/m ²	≥5500cd/m ²	≥6000cd/m ²
Color Depth	281 Trillion	281 Trillion	281 Trillion	281 Trillion	281 Trillion	281 Trillion	281 Trillion	281 Trillion
Refresh Rate(Hz)	≥1920/3840	≥1920/3840	≥1920/3840	≥1920/3840	≥1920/3840	≥1920/3840	≥1920/3840	≥1920/3840
Voltage(V)	AC 86~264V	AC 86~264V	AC 86~264V	AC 86~264V	AC 86~264V	AC 86~264V	AC 86~264V	AC 86~264V
Avg. Power Consumption	275W/m ²	275W/m ²	275W/m ²	280W/m ²	280W/m ²	300W/m ²	400W/m ²	400W/m ²
Max. Power Consumption	800W/m ²	800W/m ²	800W/m ²	800W/m ²	800W/m ²	900W/m ²	800W/m ²	800W/m ²
Service Access	Rear (Front access optional)	Rear (Front access optional)	Rear (Front access optional)	Rear (Front access optional)	Rear (Front access optional)	Rear (Front access optional)	Rear (Front access optional)	Rear (Front access optional)
IP Grade F/R	IP31/43	IP31/43	IP31/43	IP31/43	IP31/43	IP65/63	IP65/63	IP65/63
Operating Temp Humidity	-15°C ~ 50°C, 10 ~ 90%RH	-15°C ~ 50°C 10 ~ 90%RH	-15°C ~ 50°C 10 ~ 90%RH	-15°C ~ 50°C 10 ~ 90%RH	-15°C ~ 50°C 10 ~ 90%RH	-15°C ~ 50°C 10 ~ 90%RH	-15°C ~ 50°C 10 ~ 90%RH	-15°C ~ 50°C 10 ~ 90%RH
Storage Temp Humidity	-15°C ~ 60°C, 10 ~ 90%RH	-15°C ~ 60°C 10 ~ 90%RH	-15°C ~ 60°C 10 ~ 90%RH	-15°C ~ 60°C 10 ~ 90%RH	-15°C ~ 60°C 10 ~ 90%RH	-15°C ~ 60°C 10 ~ 90%RH	-15°C ~ 60°C 10 ~ 90%RH	-15°C ~ 60°C 10 ~ 90%RH
Lifetime (Normal Temp)	≥100,000H	≥100,000H	≥100,000H	≥100,000H	≥100,000H	≥100,000H	≥100,000H	≥100,000H
System Controller	Linsn,Nova	Linsn,Nova	Linsn,Nova	Linsn,Nova	Linsn,Nova	Linsn,Nova	Linsn,Nova	Linsn,Nova

ELITE SERIES

SMALL PIXEL



S



SMALL PIXEL

Small pixel series are specially designed for fixed indoor application. Available in pitch 1.25mm, 1.579mm, 1.875mm, P2.5mm, P3mm.

- With C.E, UL, BIS, RoHS, EMC Certificate.
- Die-cast aluminum with unique design,easy seamless splicing.
- Total front access, easily replace and maintain.
- Special mask design prevent light-reflection, special plastic back shell to protect PCB board not easily to be broken.
- Using flight plug and side lock, easy for connection and instillation.
- Metal cooling structure, good heat dissipation, no noise and no fan.
- All of color coded cables of higher quality.
- Pure image with great gradation brings delicate display effects.
- Wide using range, flexible and convenient, intelligent LED TV monitoring center, large scale summits ect



FAST INSTALLATION



USER FRIENDLY



EASY REPAIR



HIGH DEFINITION



FANLESS



SUPER LIGHT



NOISE FREE

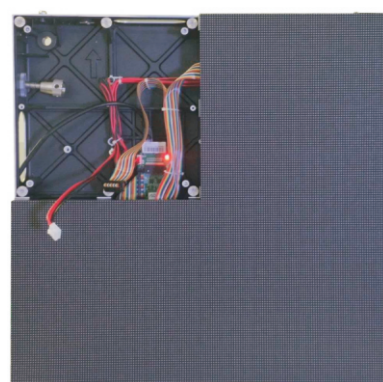
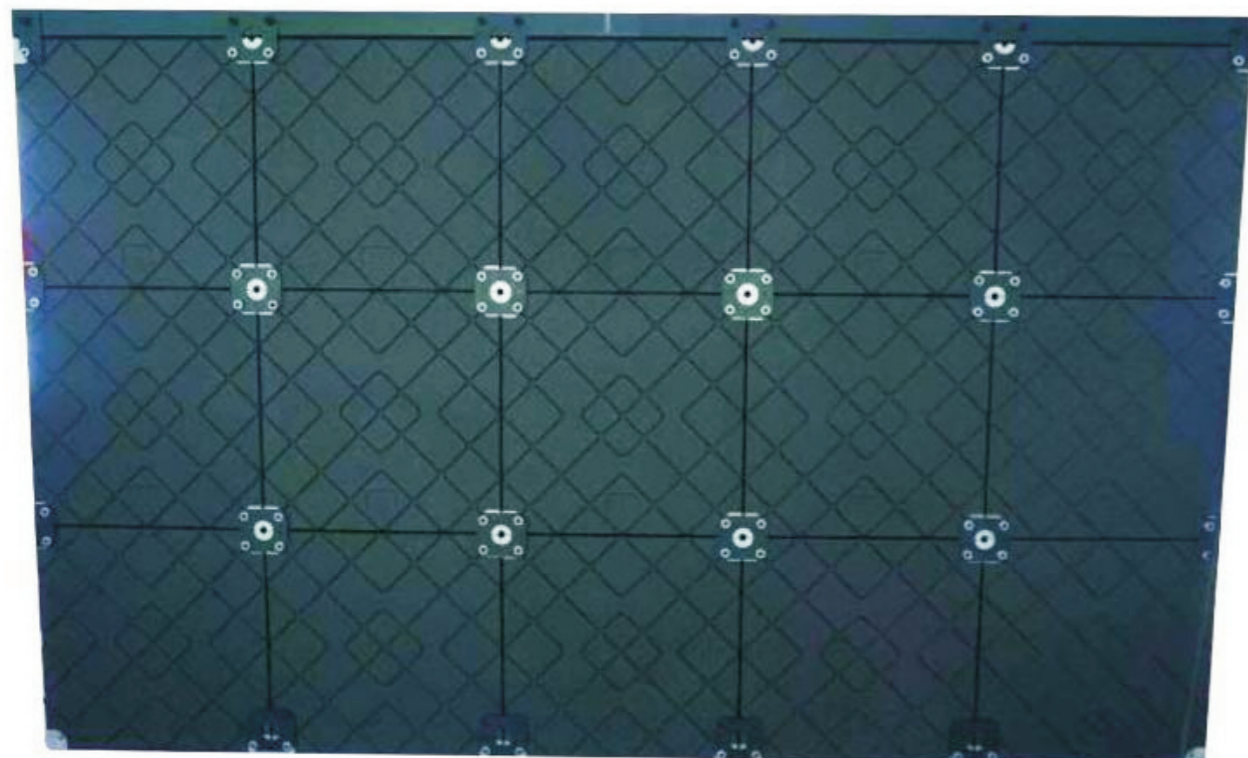


SUPER SLIM



WIDE VIEW ANGLE

SMALL PIXEL



SMALL PIXEL

Model No.	RSW-P1.25	RSW-P1.579	RSW-P1.875	RSW-P2.5	RSW-P3
LED Type	SMD1010	SMD1010	SMD1515	SMD2020	SMD2020
Pixel Pitch(mm)	1.25	1.579	1.875	2.5	3
Drive mode	1/38	1/38	1/32	1/32	1/20
Module Size(mm)	240x240	240x240	240x240	240x240	240x240
Module Resolution(Pixel)	192x192	152x152	128x128	96x96	80x80
Cabinet Size (mm)	480x480x75	480x480x75	480x480x75	480x480x75	480x480x75
Cabinet Resolution (Pixel)	384x384	304x304	256x256	192x192	160x160
Cabinet Type and Material	Aluminum Die-cast	Aluminum Die-cast	Aluminum Die-cast	Aluminum Die-cast	Aluminum Die-cast
Cabinet Weight(kg)	6Kg	6Kg	6Kg	6Kg	6Kg
Pixel Density	640,000 pixels/m ²	401,084 pixels/m ²	284,444 pixels/m ²	160,000 pixels/m ²	111,111 pixels/m ²
Viewing Angle	H 160°, V 160°	H 120°, V 120°	H 160°, V 140°	H 120°, V 120°	H 120°, V 120°
Brightness	850cd/m ²	850cd/m ²	850cd/m ²	850cd/m ²	850cd/m ²
Refresh Rate(Hz)	1920/3840	1920/3840	1920/3840	1920/3840	1920/3840
Voltage(V)	AC 86-264V	AC 86-264V	AC 86-264V	AC 86-264V	AC 86-264V
Avg. Power Consumption	<200W/m ²	<200W/m ²	<250W/m ²	<200W/m ²	<200W/m ²
Max. Power Consumption	<600W/m ²	<600W/m ²	<600W/m ²	<600W/m ²	<600W/m ²
Service Access	Total Front Access	Total Front Access	Total Front Access	Total Front Access	Total Front Access
IP Grade	IP31/43	IP31/43	IP31/43	IP31/43	IP31/43
Operating Temp/Humidity	-0°C~50°C, 10~99%RH	-0°C~50°C, 10~99%RH	-0°C~50°C, 10~99%RH	-0°C~50°C, 10~99%RH	-0°C~50°C, 10~99%RH
Storage Temp/Humidity	-0°C~60°C, 10~99%RH	-0°C~60°C, 10~99%RH	-0°C~60°C, 10~99%RH	-0°C~60°C, 10~99%RH	-0°C~60°C, 10~99%RH
Lifetime(Normal Temp)	≥100,000H	≥100,000H	≥100,000H	≥100,000H	≥100,000H
System Controller	Linsn,Novastar	Linsn,Novastar	Linsn,Novastar	Linsn,Novastar	Linsn,Novastar

SMALL PIXEL

BUDGET BI SERIES



B



BUDGET BI SERIES

Atenti BUDGET series is divided into indoor and outdoor application rental products.

- With C.E, UL, BIS, RoHS, EMC Certificate.
- Reliable quality, design, OEM model of manufacturing.
- Help clients to customize product based on budget constraints.
- All Budget application cabinet models are also designed for easy, seamless installation and dismantling.
- With high grey scale, high contrast ratio, excellent refresh rate
- High image quality and visual effect
- low maintenance product with longevity.



FAST INSTALLATION



USER FRIENDLY



EASY REPAIR



HIGH DEFINITION



FANLESS



SUPER LIGHT



NOISE FREE

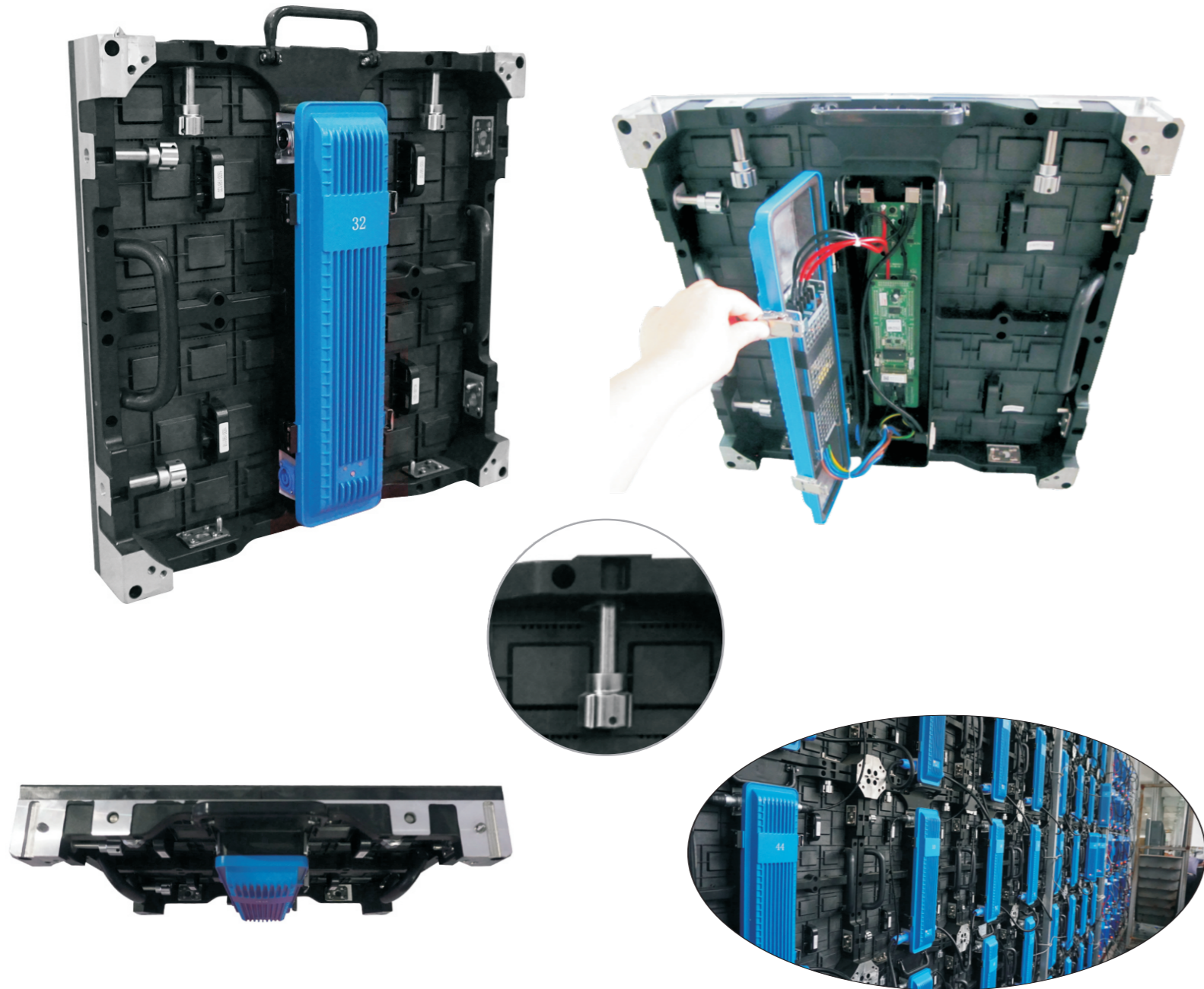


SUPER SLIM



WIDE VIEW ANGLE

BUDGET BI SERIES



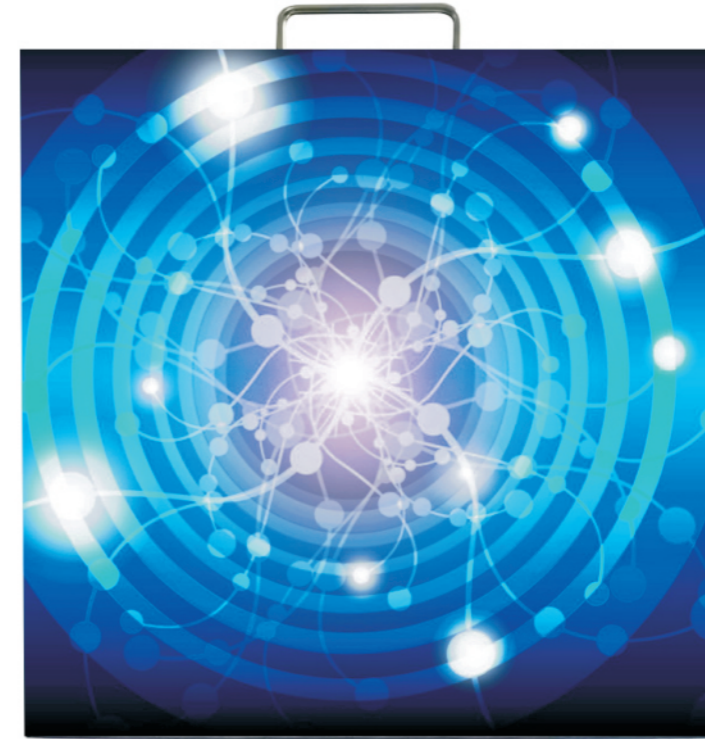
BUDGET BI SERIES

Model No.	BI-P2.97	BI-P3.91	BI-P4.81	BI-P5.95
LED Type	Black SMD 2121 Black SMD 2020	Black SMD 2121 Black SMD 2020	Black SMD 2121 Black SMD 2020	Black SMD 2121 Black SMD 2020
Pixel Pitch(mm)	2.97	3.91	4.81	5.95
Drive Method	1/28	1/16	1/16	1/16
Module Size(mm)	250 x 250	250 x 250	250 x 250	250 x 250
Module Resolution(pixel)	84 x 84	64 x 64	52 x 52	42 x 42
Cabinet Size(mm)	500 x 500 x 90	500 x 500 x 90	500 x 500 x 90	500 x 500 x 90
Cabinet Display Resolution(pixel)	168 x 168	128 x 128	104 x 104	84 x 84
Cabinet Type and Material	Aluminum Die-cast	Aluminum Die-cast	Aluminum Die-cast	Aluminum Die-cast
Cabinet Weight (Kg)	≤8	≤8	≤8	≤8
Pixel Density	112,896 pix/m ²	65,536 pix/m ²	43,264 pix/m ²	28,224 pix/m ²
Viewing Angle	H 140°, V 140°	H 120°, V 120°	H 120°, V 120°	H 120°, V 120°
Brightness	≥1200cd/m ²	≥1200cd/m ²	≥1200cd/m ²	≥1200cd/m ²
Color Depth	281 Trillion	281 Trillion	281 Trillion	281 Trillion
Refresh Rate(Hz)	≥1920	≥1920	≥1920	≥1920
Voltage(V)	AC 86~264V	AC 86~264V	AC 86~264V	AC 86~264V
Avg. Power Consumption	280W/m ²	280W/m ²	280W/m ²	280W/m ²
Max. Power Consumption	800W/m ²	800W/m ²	800W/m ²	800W/m ²
Service Access	Rear (Front access optional)	Rear (Front access optional)	Rear (Front access optional)	Rear (Front access optional)
IP Grade F/R	IP31/43	IP31/43	IP31/43	IP31/43
Operating Temp/Humidity	-0°C~50°C, 10~90%RH	-0°C~50°C, 10~90%RH	-0°C~50°C, 10~90%RH	-0°C~50°C, 10~90%RH
Storage Temp/Humidity	-0°C~60°C, 10~90%RH	-0°C~60°C, 10~90%RH	-0°C~60°C, 10~90%RH	-0°C~60°C, 10~90%RH
Lifetime(Normal Temp)	≥100,000H	≥50000H	≥50000H	≥50000H
System Controller	Linsn,Nova	Linsn,Nova	Linsn,Nova	Linsn,Nova

INDOOR FIXED SERIES



I



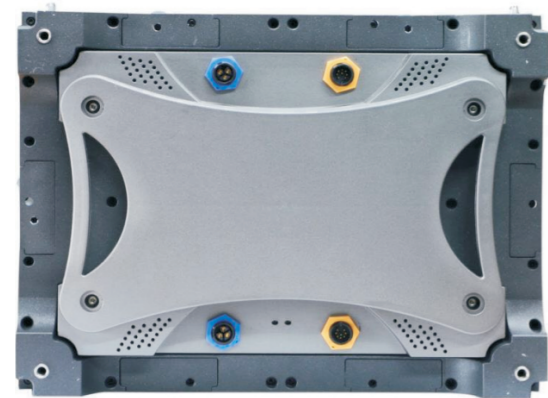
INDOOR FIXED SERIES

Atenti Fixed series is divided into both indoor, outdoor and small pixel applications. Indoor Series are specially designed for fixed indoor application. Available in pitch 1.92mm, 2.5mm, 3mm, 4mm, 5mm.

- Rear or Front access optional, front service with magnet.
- Black 3 in 1 SMD, allowing wide viewing angle and provide high-contrast images.
- Higher quality of PCB material, LED lamp, colorful coded cables etc.
- Perfect performance of surface mount technology and paste printing
- Special mask design prevents light-reflection



INDOOR FIXED SERIES



INDOOR FIXED SERIES

Model No.	AIF-P1.92	AIF-P2.5	AIF-P3	AIF-P4	AIF-P5
LED Type	Black SMD 1010	Black SMD 2121 Black SMD2020	Black SMD 2121 Black SMD 2020	Black SMD 2121 Black SMD 2020	SMD 3528
Pixel Pitch(mm)	1.923	2.5	3	4	5
Drive Method	1/32	1/16	1/16	1/16	1/8
Module Size(mm)	200 x 150	240 x 240	192 x 192	256 x 128	160 x 160
Module Resolution (pixel)	104 x 78	96 x 96	64 x 64	64 x 32	32 x 32
Cabinet Size(mm)	400 x 300 x 60	480 x 480 x 75	576 x 576 x 90	768 x 768 x 90	640 x 640 x 120
Cabinet Display Resolution(pixel)	208 x 156	192 x 192	192 x 192	192 x 192	128 x 128
Cabinet Type and Material	Aluminum Die-cast	Aluminum Die-cast	Aluminum / Die Cast	Aluminum / Die Cast	Steel / Sheet Metal
Cabinet Weight (Kg)	≤5	≤8	≤8	≤8	≤10
Pixel Density	277,005 pix/m ²	160,000 pix/m ²	111,111 /m ²	62,500 pix/m ²	40,000 pix/m ²
Viewing Angle	H 140°, V 140°	H 140°, V 140°	H 120°, V 120°	H 120°, V 120°	H 120°, V 120°
Brightness	≥800cd/m ²	≥1200cd/m ²	≥1200cd/m ²	≥1500cd/m ²	≥1800cd/m ² (4000NITS OPTIONAL)
Color Depth	281 Trillion	281 Trillion	281 Trillion	281 Trillion	281 Trillion
Refresh Rate(Hz)	≥2800/3840	≥2800/3840	≥1920/3840	≥1920	≥1920
Voltage(V)	AC 86~264V	AC 86~264V	AC 86~264V	AC 86~264V	AC 86~264V
Avg. Power Consumption	280W/m ²	280W/m ²	300W/m ²	300W/m ²	300W/m ²
Max. Power Consumption	800W/m ²	800W/m ²	900W/m ²	900W/m ²	900W/m ²
Service Access	Rear (Front access optional)	Rear (Front access optional)	Rear (Front access optional)	Rear (Front access optional)	Rear (Front access optional)
IP Grade F/R	IP31/43	IP31/43	IP31/43	IP31/43	IP43/43
Operating Temp/Humidity	-0°C~50°C, 10~90%RH	-0°C~50°C, 10~90%RH	-0°C~50°C, 10~90%RH	-0°C~50°C, 10~90%RH	-0°C~50°C, 10~90%RH
Storage Temp/Humidity	-0°C~60°C, 10~90%RH	-0°C~60°C, 10~90%RH	-0°C~60°C, 10~90%RH	-0°C~60°C, 10~90%RH	-0°C~60°C, 10~90%RH
Lifetime(Normal Temp)	≥100,000H	≥100,000H	≥100,000H	≥100,000H	≥100,000H
System Controller	Linsn,Nova	Linsn,Nova	Linsn,Nova	Linsn,Nova	Linsn,Nova

INDOOR FIXED SERIES

OUTDOOR FIXED SERIES



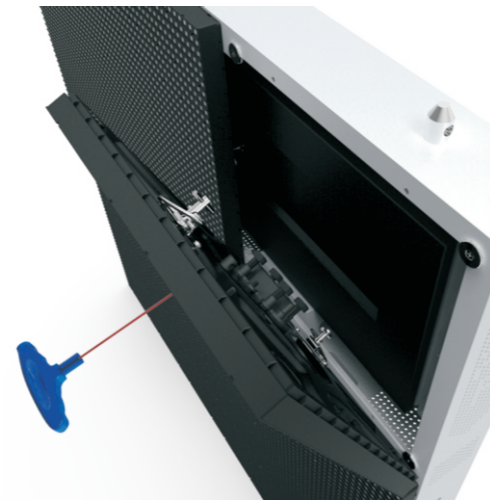
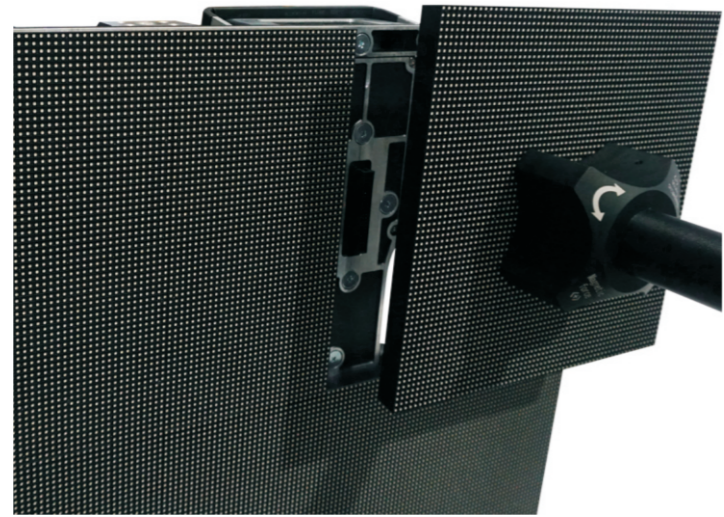
OUTDOOR FIXED SERIES

Atenti Fixed outdoor series are specially designed for outdoor and outdoor gront service applicaton. Available in pitch 3.91mm, 4.81mm, 4mm, 5mm, 6mm, 8mm, 10mm, 16mm. Outdoor P3.91 and P4.81 applications, which can be adapdbed in wall wounted instauation.

- Rear or Front access optional, front service with magnet.
- High protection degree, IP65 rating
- Super quiet fan design, high heat dissipation
- Black 3 in 1 SMD, allowing wide viewing angle and provide high-contrast images, high brightness.
- Highest quality of PCBA material is used and all the PCB' s are heat treated for minimum 24hours before mounting of the SMD Led' s.
- Advanced surface mount technology, higher quality of LED lamp colorful coded cables etc.
- Special louver design allows outdoor daytime use & improves contrast without sacrifice viewing angle, and ideal solution for any indoor/outdoor applications.



OUTDOOR FIXED SERIES



OUTDOOR FIXED SERIES

Model No.	AOF-P3.91	AOF-P4.81	AOF-P4	AOF-P5	AOF-P6	AOF-P8	AOF-P10	AOF-P16
LED Type	SMD1921	SMD2727	SMD1921	SMD2727	SMD2727	SMD3535	DIP346	DIP 346
Pixel Pitch (mm)	3.91	4.81	4	5	6	8	10	16
Drive Method	1/16	1/13	1/5	1/8	1/8	1/4	1/2	Static
Module Size (mm)	250 x 250	250 x 250	240x240 320x320	320x160	192x192	320x320	320x320	320x320
Cabinet Size (mm)	500 x 500 x 90	500 x 500 x 90	960x960x150	960x960x150	960x960x150	640x640x105	960x960x105	960x960x180mm
Cabinet Material	Aluminum Die-cast	Aluminum Die-cast	Steel	Steel	Steel	Aluminum	Steel	Aluiminum
Pixel Density	65,536 pix/m ²	43,264 pix/m ²	62500 pixels/m ²	40,000 pixels/m ²	27,776 pixels/m ²	15,625 pixels/m ²	10,000 pixels/m ²	3906 pixels/m ²
Viewing Angle	H 140°, V 140°	H 140°, V 140°	H 140°, V 140°	H 120°, V 120°	H 160°, V 160°	H 160°, V 160°	H 160°, V 160°	H 160°, V 160°
Brightness	≥5000cd/m ²	≥5500cd/m ²	≥5500cd/m ²	≥5500cd/m ²	≥5500cd/m ²	≥5500cd/m ²	7500cd/m ²	7500cd/m ²
Refresh Rate (Hz)	≥1920	≥1920	1920	1920	1920	1920	1920	3800Hz
Voltage(V)	AC 86~264V	AC 86~264V	AC 240V	AC 240V	AC 240V	AC 240V	AC 240V	AC 110-240V
Avg. Power Consumption	300W/m ²	350W/m ²	280W/m ²	<280W/m ²	<280W/m ²	<280W/m ²	<250W/m ²	<250W/m ²
Max. Power Consumption	800W/m ²	800W/m ²	<800W/m ²	<850W/m ²	<850W/m ²	<850W/m ²	<750W/m ²	<750W/m ²
Service Access	Front access (Rear Optional)	Rear (Front Optional)	Rear (Front Optional)	Rear (Front Optional)	Rear (Front Optional)	Rear (Front Optional)	Rear (Front Optional)	Rear (Front Optional)
IP Grade	IP65/54	IP65/54	IP65 front and rear	IP65 front and rear	IP65 front and rear	IP65 front and rear	IP65 front and rear	IP65/IP65
Operating Temp Humidity	-15°C~50°C 10~90%RH	-15°C~50°C 10~90%RH	-20°C~50°C 10~99%RH	-20°C~50°C 10~99%RH	-20°C~50°C 10~99%RH	-20°C~50°C 10~99%RH	-20°C~50°C 10~99%RH	-40°C~50°C 10~90%RH
Storage Temp Humidity	-15°C~60°C 10~90%RH	-15°C~60°C 10~90%RH	-40°C~60°C 10~99%RH	-40°C~60°C 10~99%RH	-40°C~60°C 10~99%RH	-40°C~60°C 10~99%RH	-40°C~60°C 10~99%RH	-600°C~60°C 10~90%RH
Lifetime (Normal Temp)	≥100,000H	≥100,000H	≥100,000H	≥100,000H	≥100,000H	≥100,000H	≥100,000H	≥100,000H
System Controller	Linsn,Nova	Linsn,Nova	Novastar	Novastar	Novastar	Novastar	Novastar	Novastar
Weight/sqm	≤8.5	≤8.5	50Kg	50Kg	50Kg	50Kg	55Kg	60Kg

RETAIL SIGNAGE SERIES



R



RETAIL SIGNAGE SERIES

Atenti RETAIL series are specific applications catering to the indoor /outdoor environment for retail store design and advertising.

- Exclusive series for retail signage and store design to catch people eye and enhance sales turnover.
- Customized Cabinets can meet different demands, based on the installation space and screen size.
- Unique slim design of cabinet is only 65mm, and can be wall mounted directly or on-to a sub-frame.
- Product design for retail industry uses minimum basic space to reduce the space need for installation.



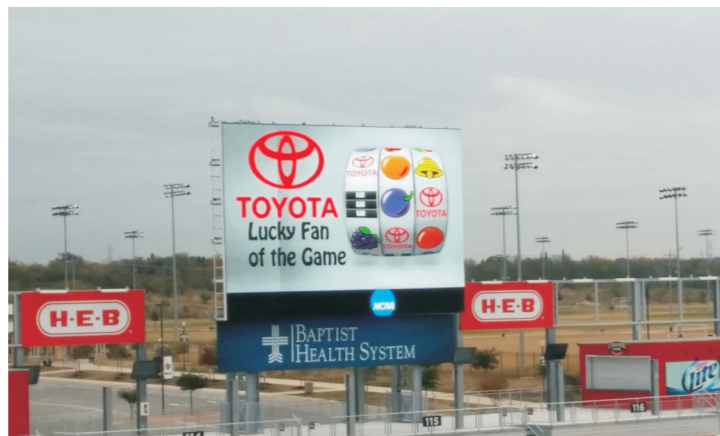
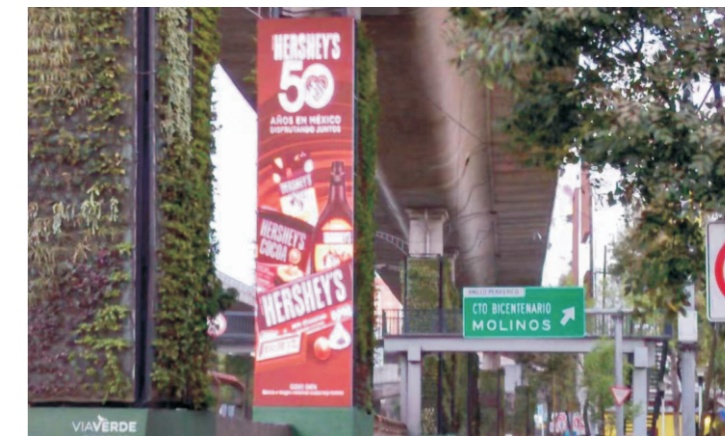
RETAIL SIGNAGE SERIES



RETAIL SIGNAGE SERIES

Model No.	Flex Totem – P6	RS-P1.875	RS-P2.5	RS-P3	RS-P3.91	Totem –P3.91 window sign	Transparent Totem – P5
LED Type	Black SMD3528	SMD1515	SMD2020	SMD2020	SMD2020	OUTDOOR BLACK SMD 1921	SMD4321 - High Brightness
Pixel Pitch(mm)	6.67	1.875	2.5	3	3.91	3.91	5
Drive Method	1/12	1/32	1/32	1/20	1/16	1/8	1/3
Module Size(mm)	320x160mm	240 X 240	240 X 240	240 X 240	250 X 250	280 X 250	960 X 87
Module Resolution (pixel)	48x24	128x128	96x96	80x80	64x64	64x64	192x1
Pixel Density	22500 pixels/m ²	284,444pixels/m ²	160,000pixels/m ²	111,111pixels/m ²	65,536pixels/m ²	65,536 pixels/m ²	25,000pixels/m ²
Viewing Angle	H 140°, V 140°	H 140°, V 140°	H 140°, V 140°	H 140°, V 140°	H 120°, V 120°	H 120°, V 120°	H 140°, V 140°
Brightness	1300cd/m ²	850cd/m ²	1200cd/m ²	1200cd/m ²	1200cd/m ²	5000cd/m ²	5500cd/m ²
Color Depth	281 Trillion	281 Trillion	281 Trillion	281 Trillion	281 Trillion	281 Trillion	281 Trillion
Refresh Rate(Hz)	960 / 2400	≥3840	≥1920	≥1920	≥1920	1920/3840	1600/3840
Frame Rate(Hz)	≥60	≥60	≥60	≥60	≥60	≥60	≥60
Voltage(V)	110-240V	84 VAC - 240VAC	84 VAC - 240VAC	84 VAC - 240VAC	84 VAC - 240VAC	84 VAC - 240VAC	84 VAC - 240VAC
Avg. Power Consumption	<300w	<250w	<250w	<280w	<275w	<420w	<350w
Max. Power Consumption	<800w/m ²	<600w	<600w	<650w	<800w	<840w	<1050w
Service Access	FRONT / REAR	Total Front Access	Total Front Access	Total Front Access	Total Front Access	REAR / FRONT	FRONT/REAR
IP Grade	IP31	IP31	IP31	IP31	IP31	IP43	IP43
Operating Temp Humidity	-10°C~50°C 10~90%RH	-0°C~40°C 10~90%RH	-0°C~40°C 10~90%RH	-0°C~40°C 10~90%RH	-0°C~40°C 10~90%RH	-20°C~40°C 10~90%RH	-0°C~40°C 10~90%RH
Storage Temp Humidity	-10°C~60°C 10~90%RH	-0°C~50°C 10~90%RH	-0°C~50°C 10~90%RH	-0°C~50°C 10~90%RH	-0°C~50°C 10~90%RH	-30°C~50°C 10~90%RH	-0°C~50°C 10~90%RH
Lifetime (Normal Temp)	≥100,000H	≥100,000H	≥100,000H	≥100,000H	≥100,000H	≥100,000H	≥100,000H
System Controller	Novastar	Novastar	Novastar	Novastar	Novastar	Novastar	Novastar
Cabinet Frame Size(mm)	Customized Cabinet	Customized Cabinet	Customized Cabinet	Customized Cabinet	Customized Cabinet	1050mm x 1550mm- Thickness 45mm (at edges) and 75mm in the middle	960mm x 1344mm
Screen Weight (kg)	Customized	Customized	Customized	Customized	Customized	45Kg	19Kg
Screen resolution	Customized	Customized	Customized	Customized	Customized	256X384	192X168

PROJECTS



PROJECTS

